

Steinberg Architects

2010 Update to the Los Angeles Valley College Facilities Master Plan

Board of Trustees
February 23, 2011



Educational Master Plan Goals

- Increase student access
- Enhance academic programs and services to meet student needs
- Enhance institutional effectiveness
- Increase student retention, persistence and success



Facilities Master Plan Goals

- Provide an **attractive, safe, accessible and high-quality** learning environment.
- Create a rich **campus life experience**.
- Provide an environment that stimulates co-curricular activities, community and economic development, and cultural and athletic events.
- Maintain the **park-like quality** with a rich variety of trees.
- Turn the campus into a “**laboratory for learning**” that respects the environment and integrates sustainable design and practices.
- Provide a **variety of gathering spaces** appropriate for the college’s diverse population
- Strengthen the **identity** of the college by improving the campus’ edges and wayfinding.
- Link disjointed areas through landscaping and visual axes to achieve a more **cohesive campus**.



- EXISTING BUILDINGS TO REMAIN
- BUILDINGS W/ CHANGE OF USE
- NEW BUILDINGS
- PARKING
- PATH

Source: EPT Design, April 2003; Myra L. Frank & Associates, Inc., 2003

2003 Master Plan

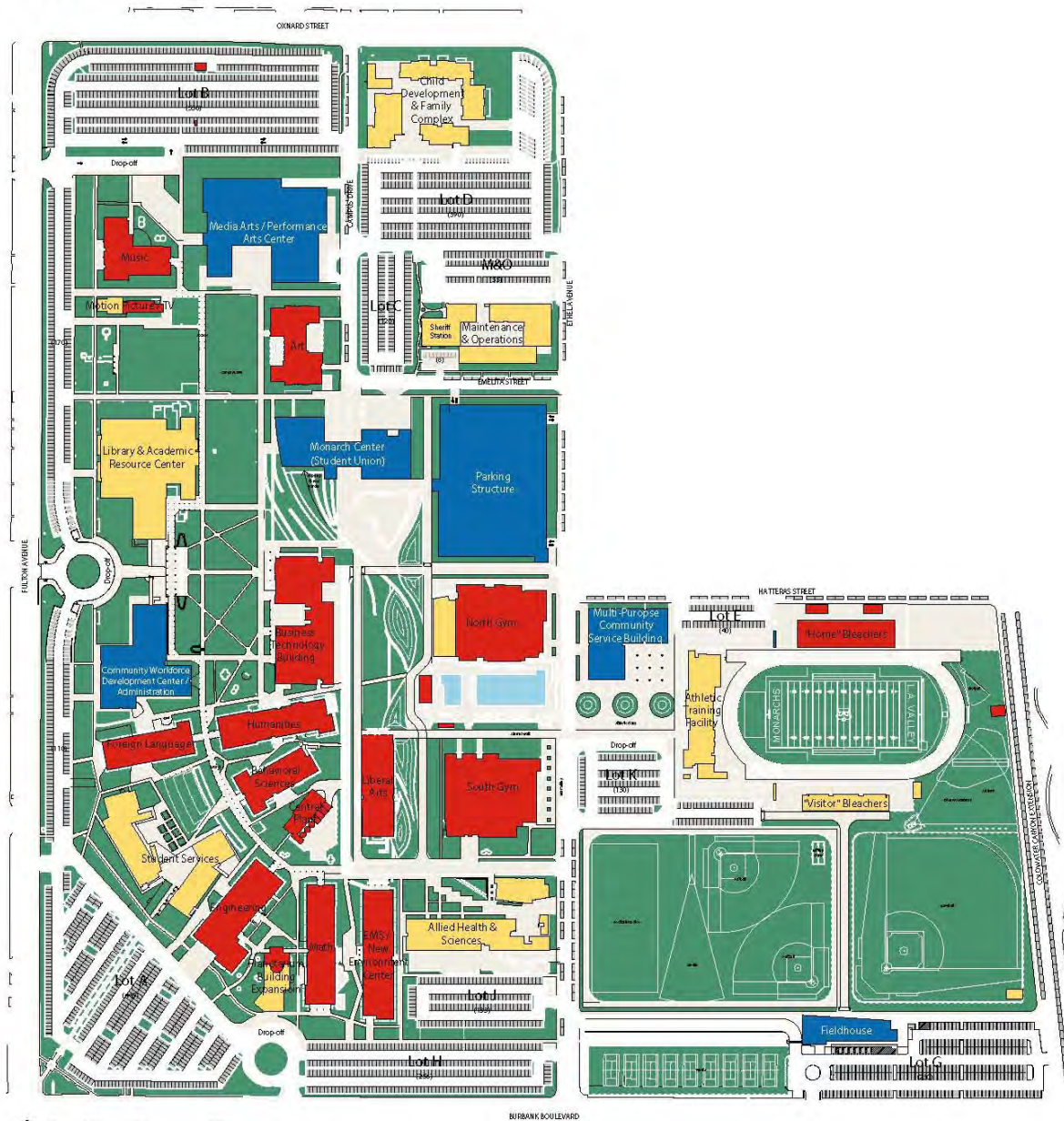


- Academic Buildings
- Administrative Buildings
- Parking
- Other



BTA (Borough of Toms River and Associates) Architects and Planners, Inc.

MTA



- Buildings Extant in 2003 and Retained in 2005 and 2010 Updates
- Buildings/Building Additions Proposed in 2005 Update
- Buildings Proposed in 2010 Update

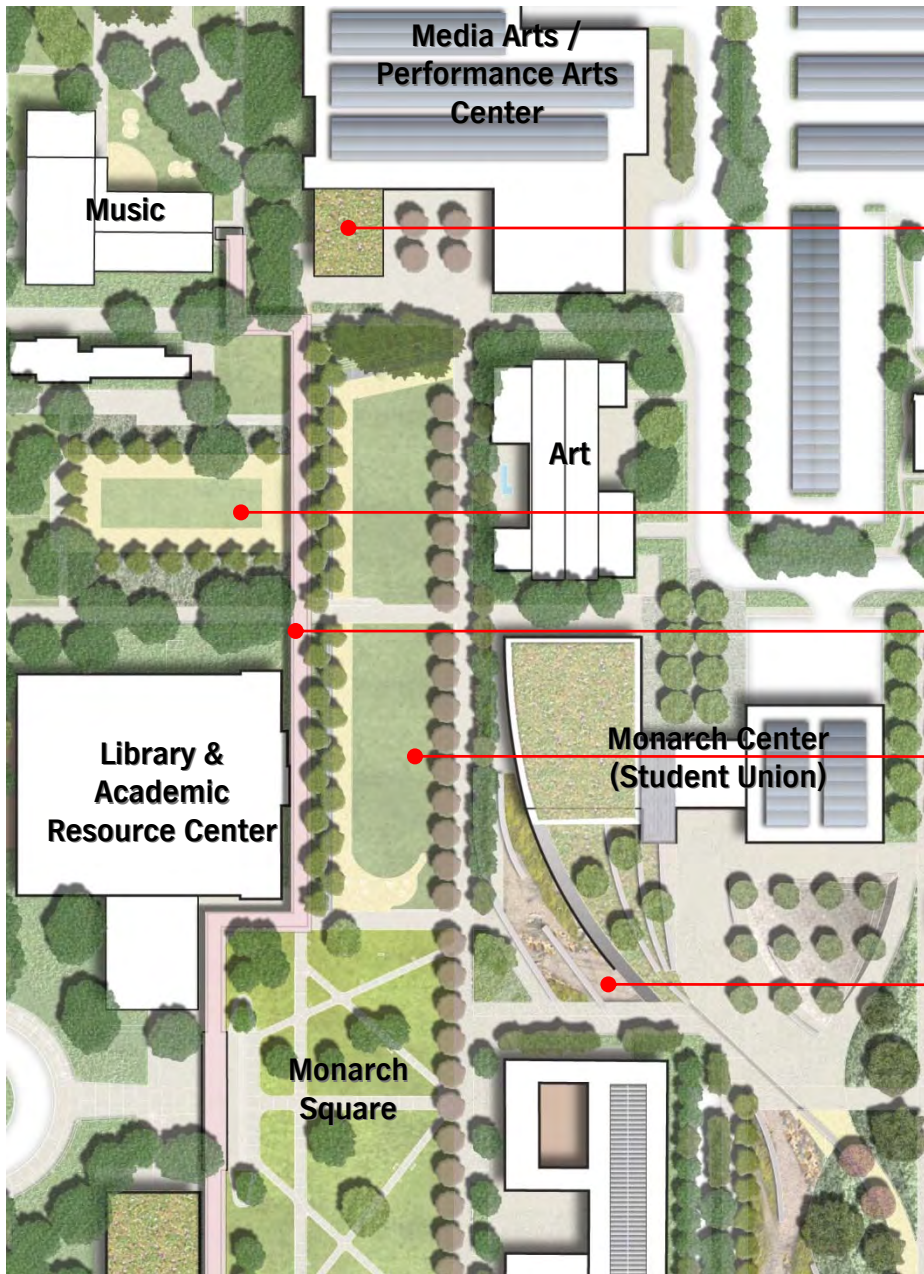
2010 Master Plan Update

A photograph of a campus landscape. A paved walkway runs through the center, flanked by green grass and large trees with dense foliage. Several people are sitting on concrete benches along the path. A tall, thin light pole stands on the right side. The word "landscape" is overlaid in a large, semi-transparent font across the middle of the image.

landscape



Landscape Plan



Arts Events Garden & Amphitheater

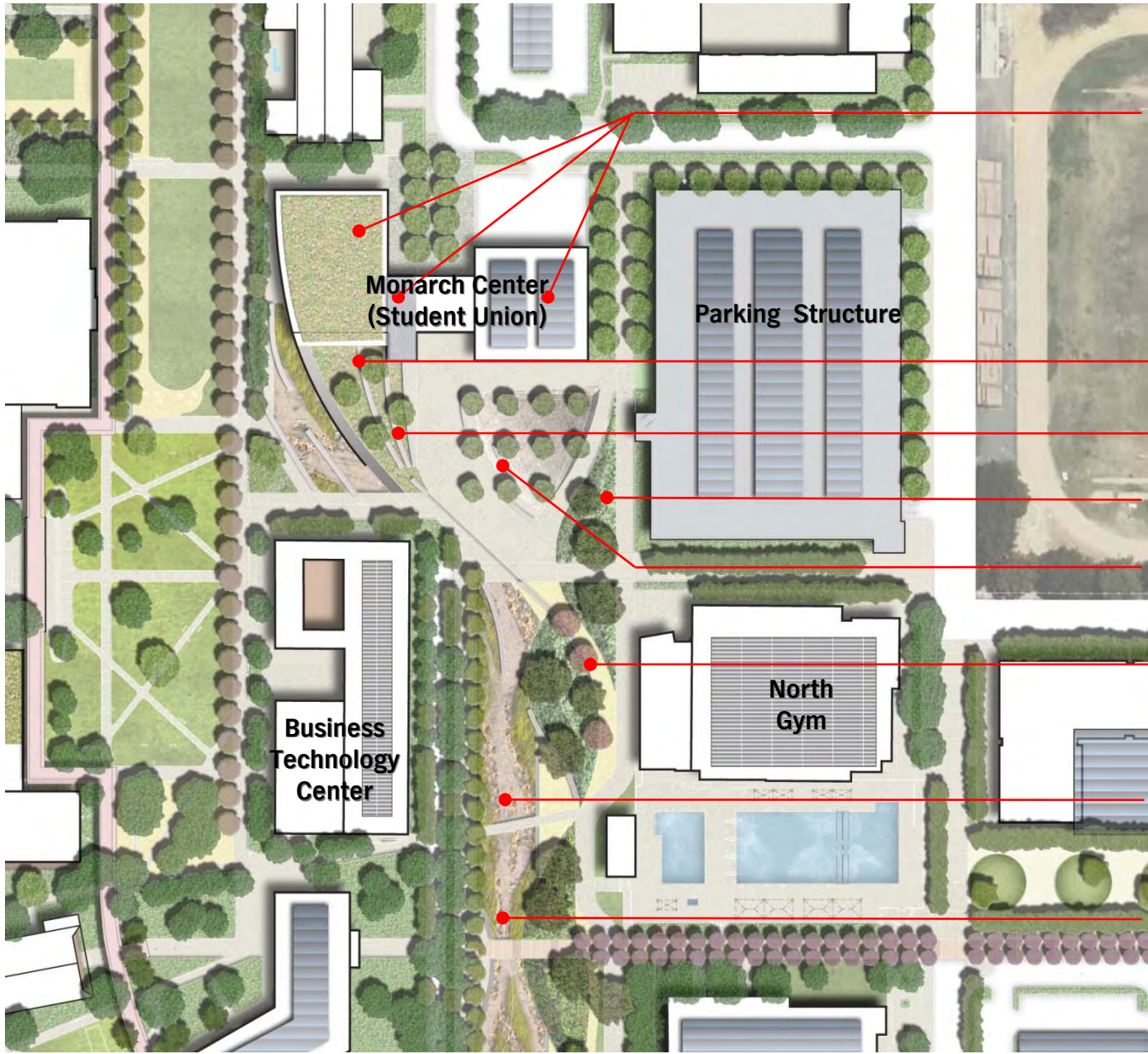
New Landscape Arcade

Seating Areas on Existing Slope with DG Paving & Native Plantings

Existing Lawn

Storm Water Riparian Feature

North Mall



Roof contains Green Roof, Outdoor Terrace, & PV

Monarch Center (Student Union)

Parking Structure

Landscape Slopes up from Plaza to Roof

Garden Amphitheater

Optional Water Treatment Area

Courtyard with Native Canopy

Business Technology Center

North Gym

Upland Biome: Native Upland Species with Oak Canopy and Berms

Riparian Biome: Native Riparian Infiltration Feature with Gravel, Rocks and Plants

Seating Areas and Outdoor Classrooms with Interpretative Signage

Monarch Center Plaza and Sustainable Park



Sustainable Park

A close-up photograph of a leaf's vein structure, showing a network of veins in shades of orange and yellow. The veins are prominent and form a complex, interconnected pattern. The background is a soft, warm orange color, suggesting the leaf is in autumn. The word "sustainable" is overlaid in a bold, grey font across the center of the image.

sustainable



-  Existing Sun Chiller Solar Vacuum Heat Tubes
-  Existing Photovoltaics
-  New Photovoltaics
-  "Big Belly" Trash Bins
-  Resource Recovery Center
-  Wind Turbines
-  Heat Pump System
-  Water Infiltration
-  Wastewater Collection
-  Stormwater Collection
-  Biome / Natural Habitat

Proposed Sustainable Strategies

A 3D rendered scene featuring a group of stylized human figures. In the background, a circle of approximately ten white, semi-transparent figures holds hands, forming a ring. In the foreground, a single, solid red figure stands with its arms raised in a gesture of celebration or leadership. The word "community" is overlaid in a large, bold, black sans-serif font across the center of the image.

community



Campus-wide Signage

Performing Arts Venues

Arts Events Garden & Amphitheater

Art Gallery

Public Art

LAVC Museum and Archives

Workforce Development Center

Multi-purpose Community Services Building

Pool

Community Walking Track

Planetarium Programs

Tennis Courts

Community Engagement

A grayscale photograph of a college campus scene. In the foreground, several students are walking away from the camera. One student in the center has a dark backpack. To the left, a student is sitting on a wooden bench. In the background, there are large, leafy trees, a white canopy tent, and other students. The overall atmosphere is that of a busy campus day.

Los Angeles Valley College EIR Addendum for the 2010 Master Plan Update

HISTORY OF CEQA ACTIONS

- EIR for the 2003 Facilities Master Plan certified in August 2003.
- An Addendum to the EIR was prepared for the 2005 Master Plan Update.
- Current Addendum to the EIR prepared for the Proposed 2010 Master Plan Update.
- The purpose of a CEQA Addendum is to demonstrate that proposed project changes would neither cause a new significant environmental impact nor exacerbate a significant impact already disclosed in the EIR (CEQA Guidelines § 15162-15164).

ADDENDUM FINDINGS

- The development proposed under the Master Plan Update would not cause any new significant impacts or exacerbate those significant impacts disclosed in the 2003 EIR.
- The two previously proposed mitigation measures to reduce traffic impacts at 10 intersections were deleted as the Master Plan Update would not result in significant impacts at these intersections.
- Traffic analysis demonstrated that lower trip generation is occurring than was forecast in the 2003 EIR (due in part to decreased enrollment growth and FTES levels).
- Parking supply on campus will be sufficient to meet demand for development proposed under the Master Plan Update.

ADDENDUM FINDINGS (CONT'D)

- The actions proposed under the Master Plan Update would not worsen levels of service (LOS) at local intersections.
- New mitigation measures were added to address Greenhouse Gas Emissions, Noise (based on current assessment standards) and Biological Resource impacts.
- New mitigation measures were added to ensure that no impacts to Historic Resources and Aesthetics result from the tree removals associated with the proposed Media Arts/Performing Arts Center.

PUBLIC OUTREACH

- Public outreach program utilized the College website, social media communication platforms (e.g., Facebook, Twitter), e-mail blasts and mailers, and newspaper notices, as well as direct community contact to notify the public and identify public concerns.
- Consensus Inc. and the LAVC Public Relations Officer Jennifer Fong-Borucki worked with President Carleo, the Environmental Consultant, and outside District legal counsel to plan the public outreach strategy. A synopsis of the public outreach plan and results was prepared.
- An open house-format public meeting took place at Campus Center Feb 1st at 6:30 pm.
- Approximately 20-24 members of the public attended the public meeting.

PUBLIC COMMENTS

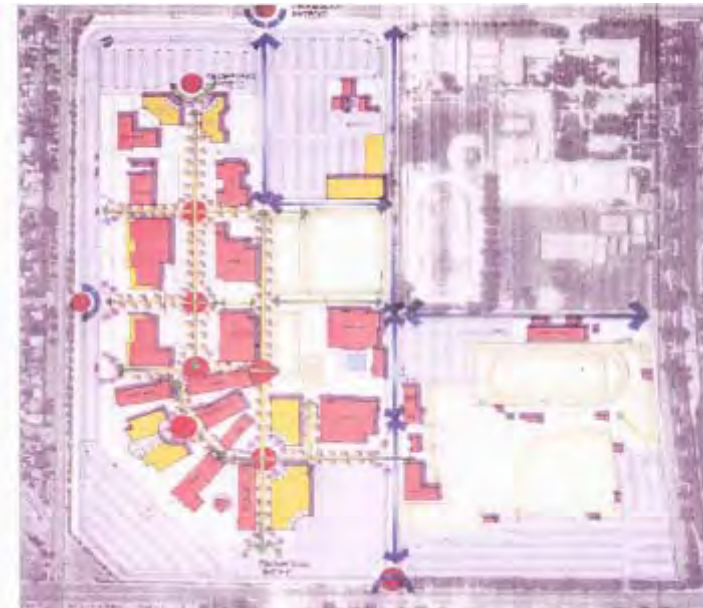
- The closing date for the submittal of written comments was February 4th at 5 pm.
- A total of eight comment letters, public meeting comment sheets, and one e-mailed comment were received.
- The comments and the written responses to them appears as the last chapter in the Final EIR Addendum.
- Of the comments received, two were not directly germane to either the 2010 Master Plan Update and EIR Addendum.

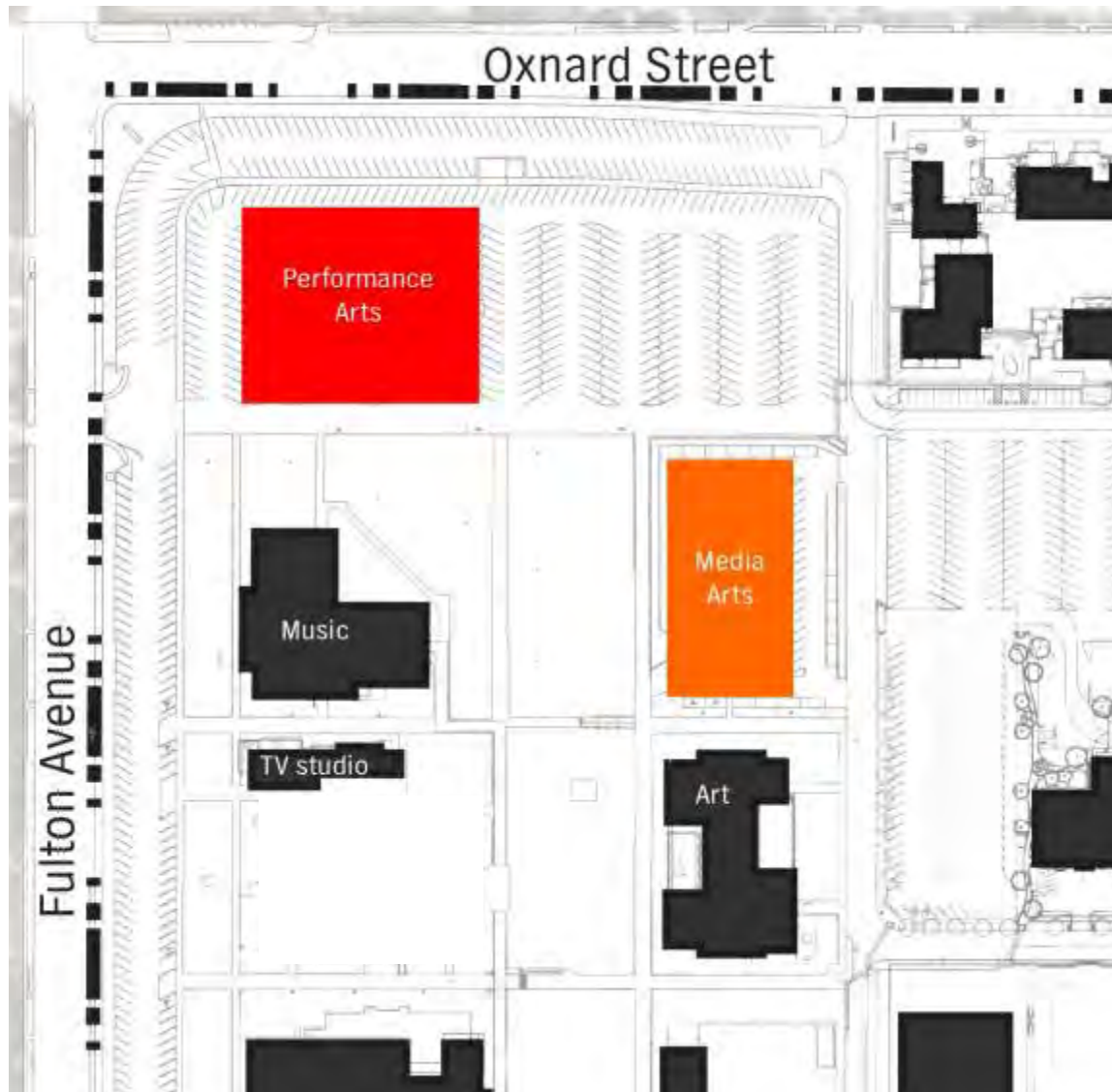
PUBLIC COMMENTS

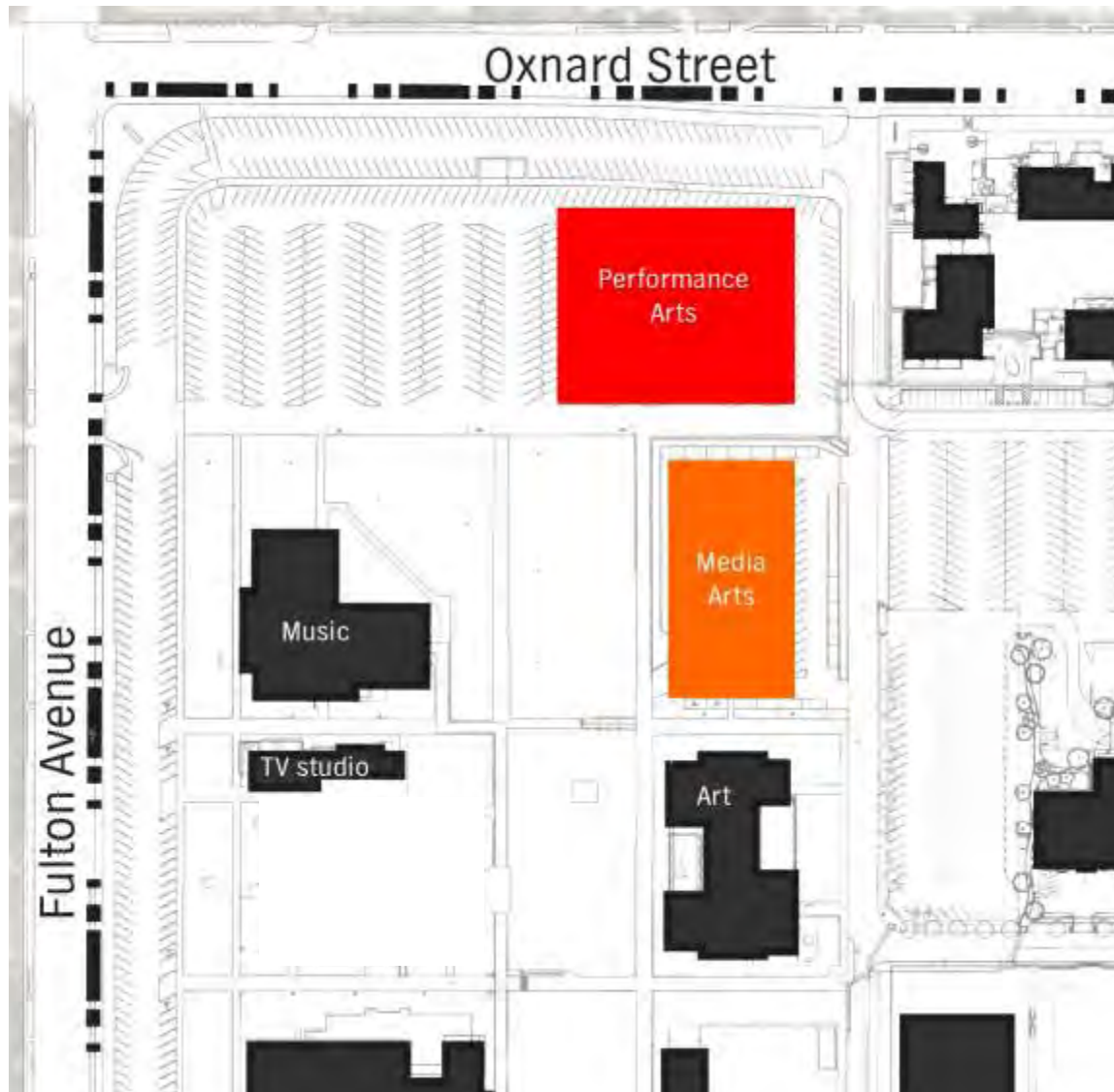
- One letter of support was received from Councilmember Paul Krekorian.
- Three of the comments received pertained to parking issues.
- Two comments pertained to landscaping issues, including one question about the effect of trees on the Planetarium night-sky views, and one pertaining to the tree removals called for as part of the Media Arts/Performing Arts Center.
- No new information was received in the public comments that would materially change the EIR Addendum findings.



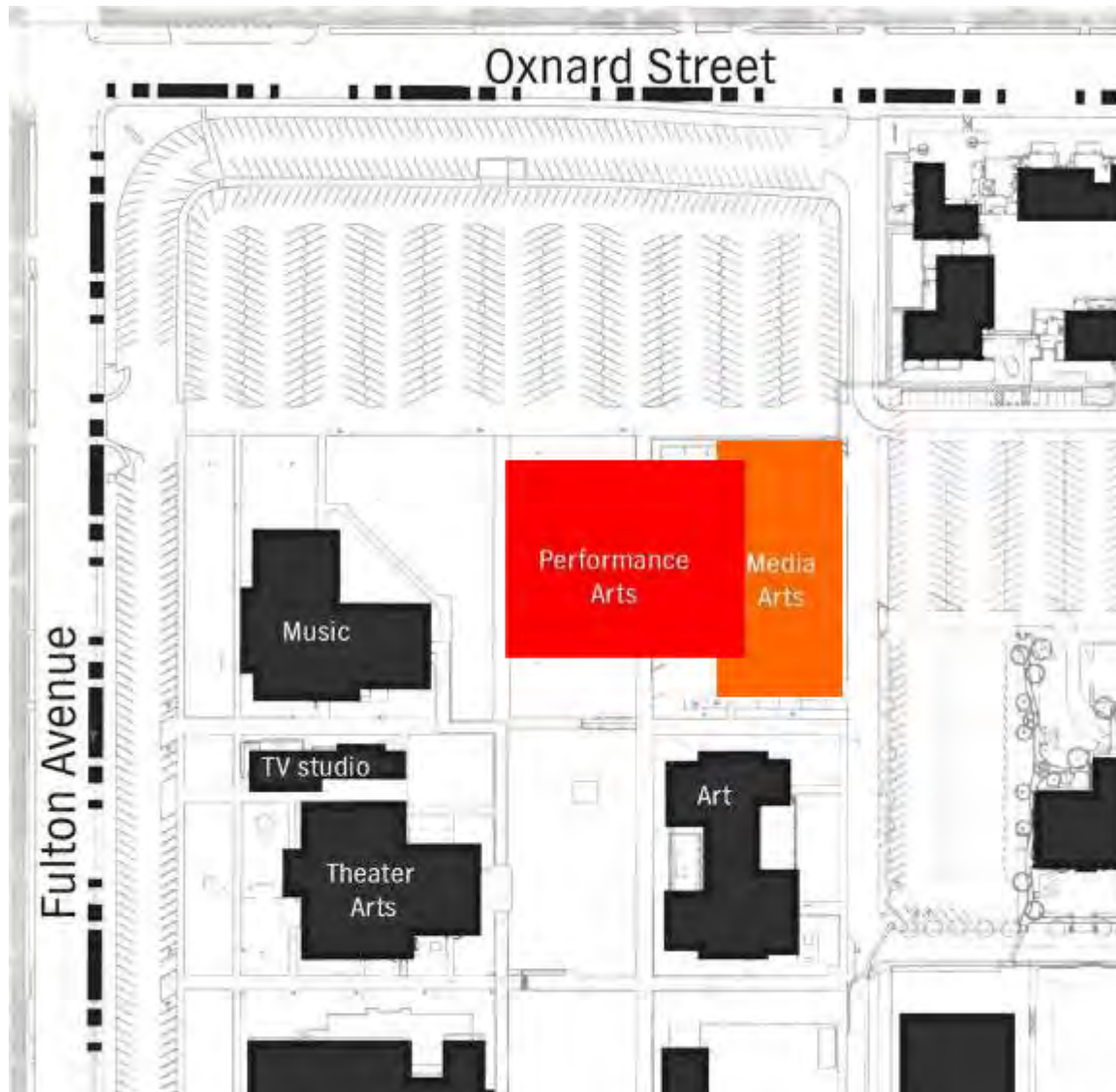
Arts District

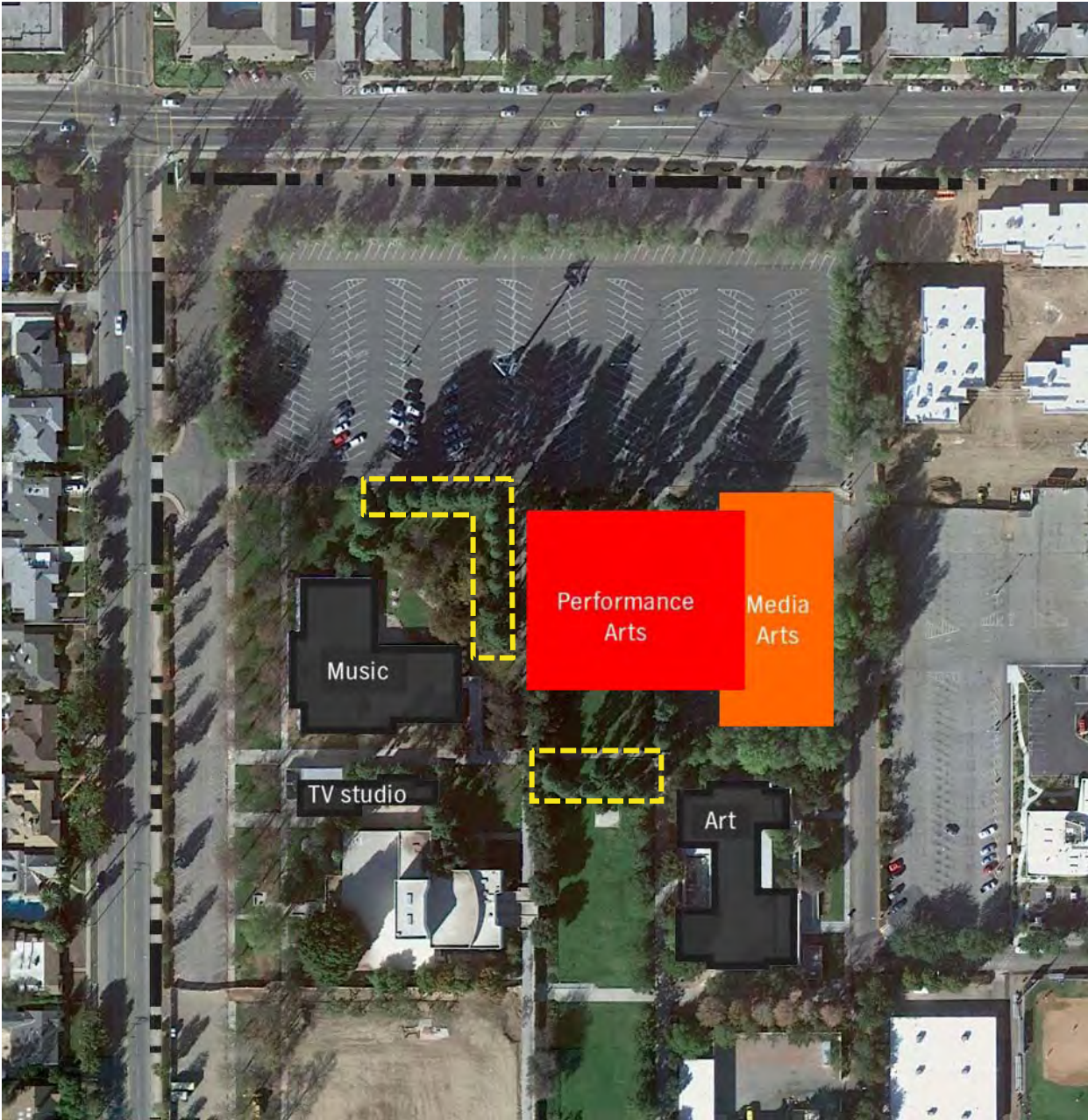












Arts District – Option D



Tree Removal Plan



Site Plan





Preservation of Existing Trees



Preservation of Existing Trees



Re-using existing Trees in Our project

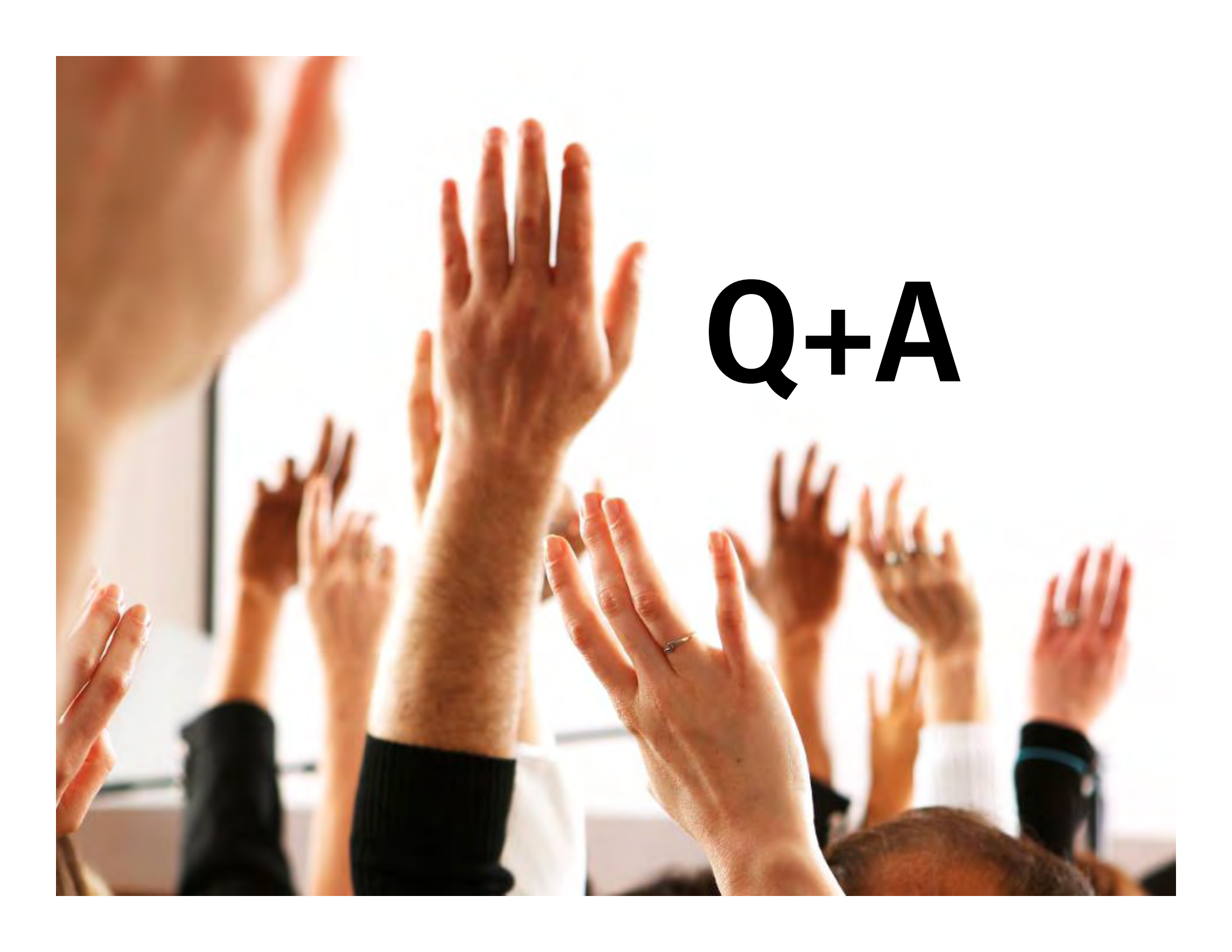
The Canary Island Pine trees slated for removal will be milled on site and the lumber will be used in various components of the project. This unique process provides both a local and sustainable source the project's wood elements while simultaneously redirecting a valuable resource from ending up in a landfill. The Local Wood Company will mill the logs on site using low-powered machinery and solar-powered drying techniques which will then be used in the following features:

- Wood screen walls in the Main Theater and Lobby
- Benches and other site seating





Site Harvested Wood

A photograph showing the backs of several people's heads and their hands raised in the air, suggesting an interactive session like a Q&A period. The hands are of various skin tones and some have rings. The background is bright and out of focus. The text 'Q+A' is overlaid in a large, bold, black font on the right side of the image.

Q+A