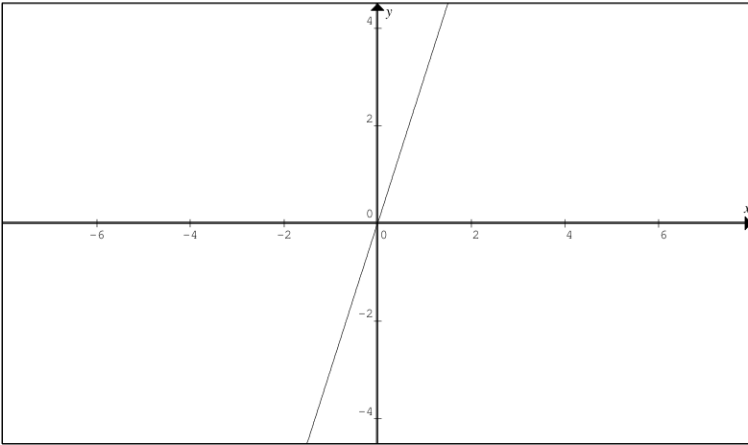


Intermediate Algebra Skill

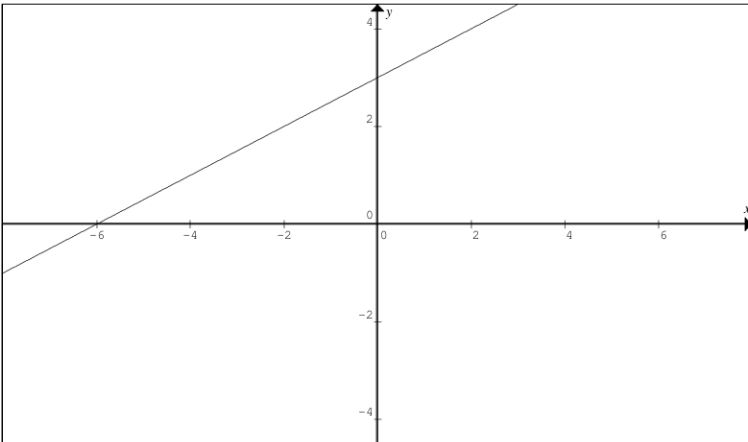
Determining the Existence of the Inverse: Given the Graph

Determine whether or not the given function is one-to-one:

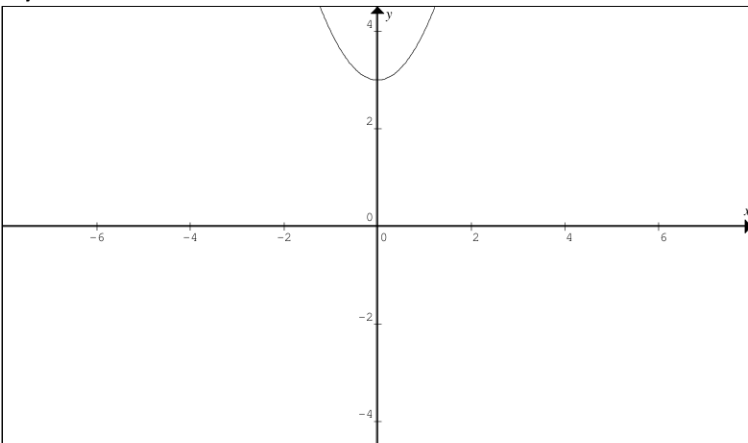
1)



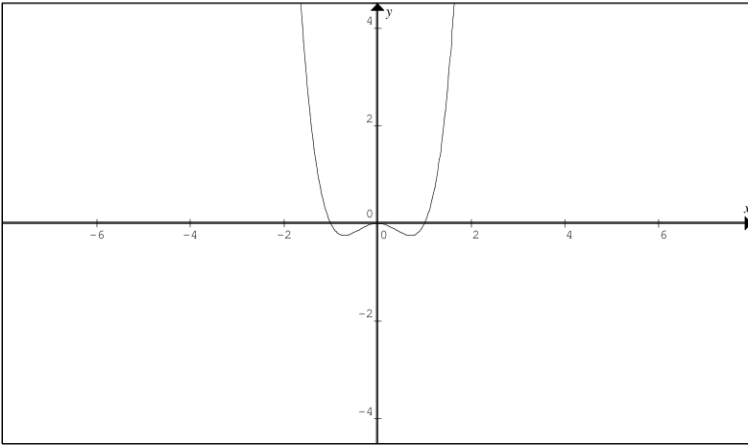
2)



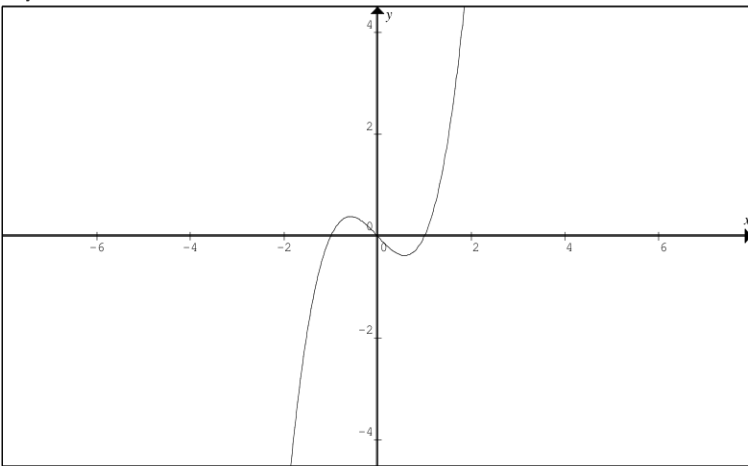
3)



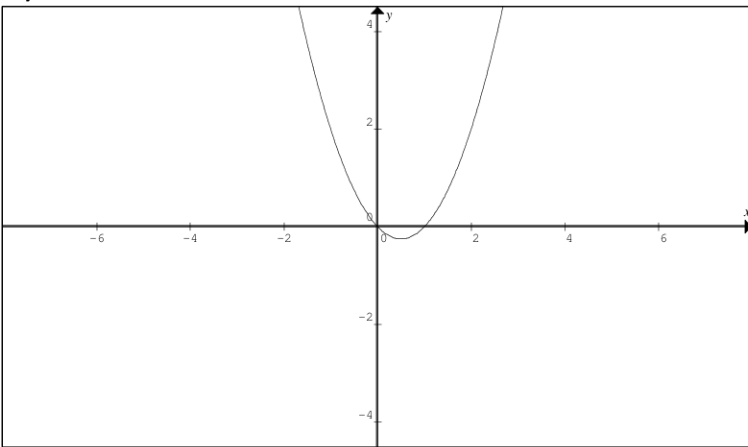
4)



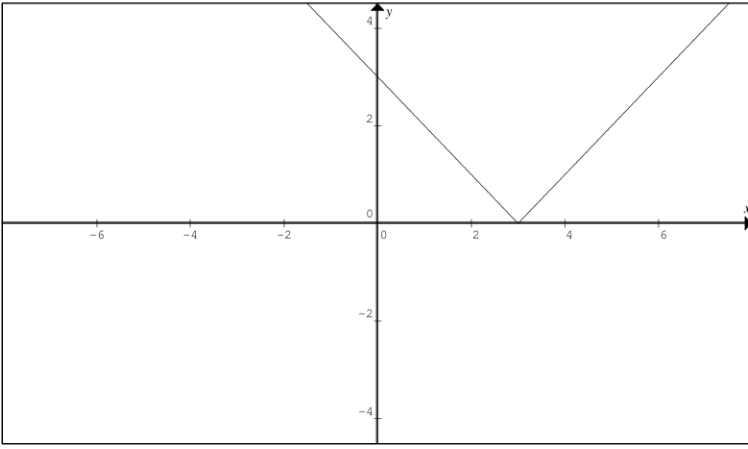
5)



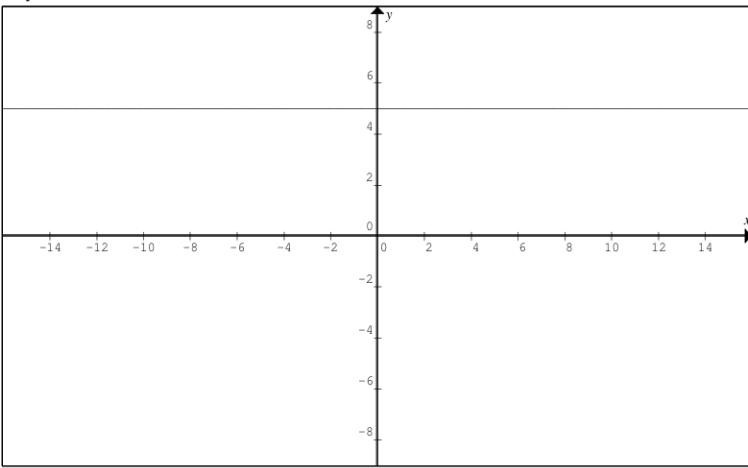
6)



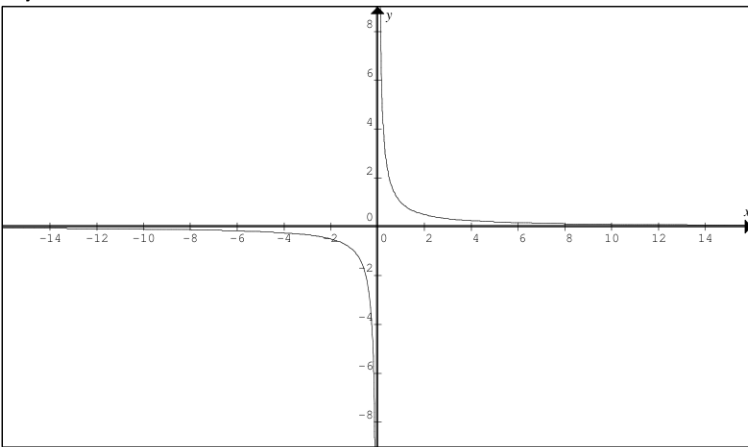
7)



8)



9)



Answers to Determining the Existence of the Inverse: Given the Graph

1) 1-1

2) 1-1

3) not 1-1

4) not 1-1

5) not 1-1

6) not 1-1

7) not 1-1

8) not 1-1

9) 1-1