

Intermediate Algebra Skill

Sketching Graphs Involving Combined Transformations

Sketch the graph:

$$1) y = (x+3)^2 - 2$$

$$2) f(x) = (x-1)^2 + 1$$

$$3) g(x) = -2(x+1)^2 + 1$$

$$4) h(x) = \frac{1}{2}(x+2)^2 - 3$$

$$5) j(x) = 3|x-2|$$

$$6) g(x) = \frac{1}{2}|x| + 1$$

$$7) f(x) = -|x+1| - 2$$

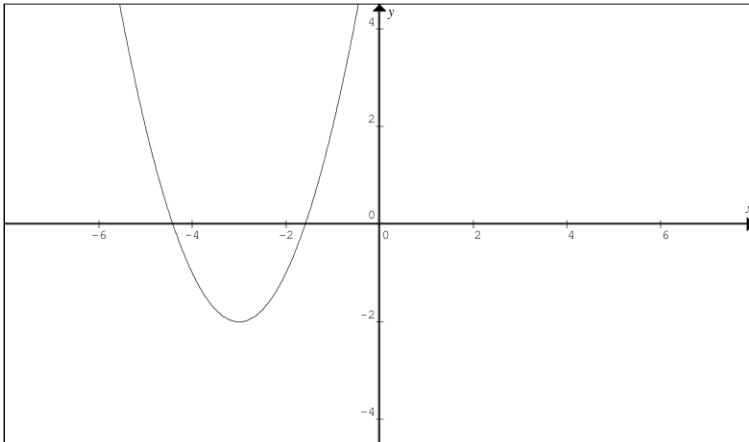
$$8) T(x) = \sqrt{x+2} - 2$$

$$9) Q(x) = 1 - \frac{1}{x-1}$$

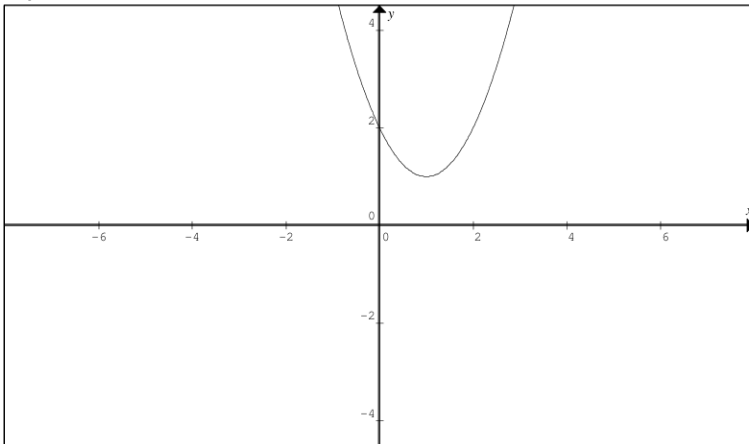
$$10) H(x) = -\frac{1}{x+2} - 2$$

Answers to Sketching Graphs Involving Combined Transformation

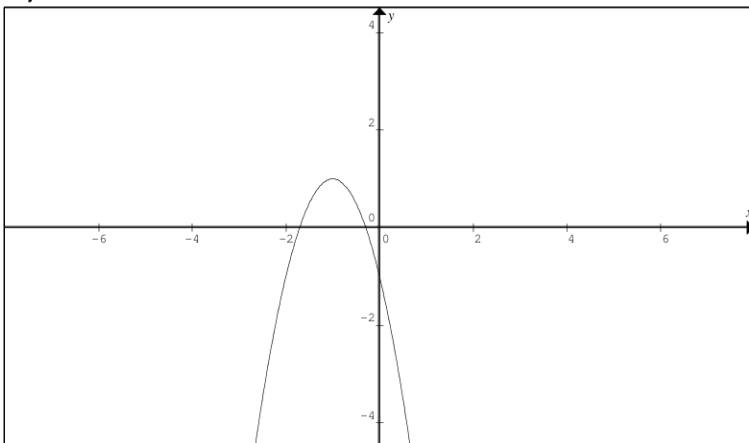
1)



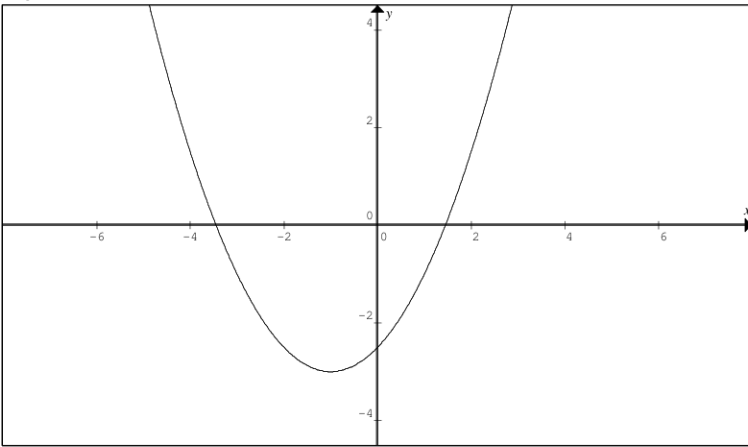
2)



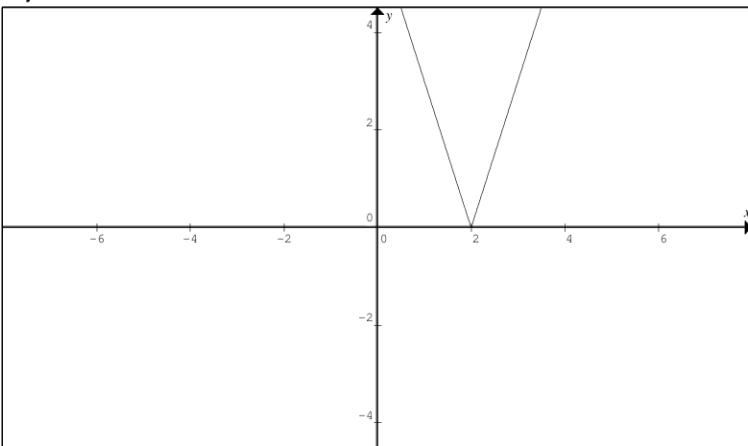
3)



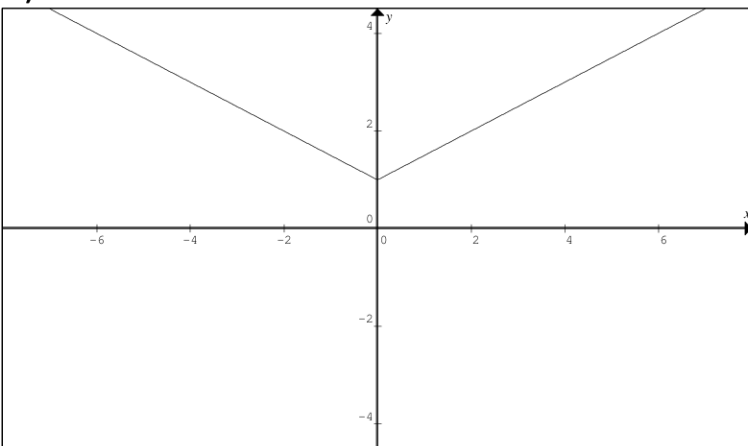
4)



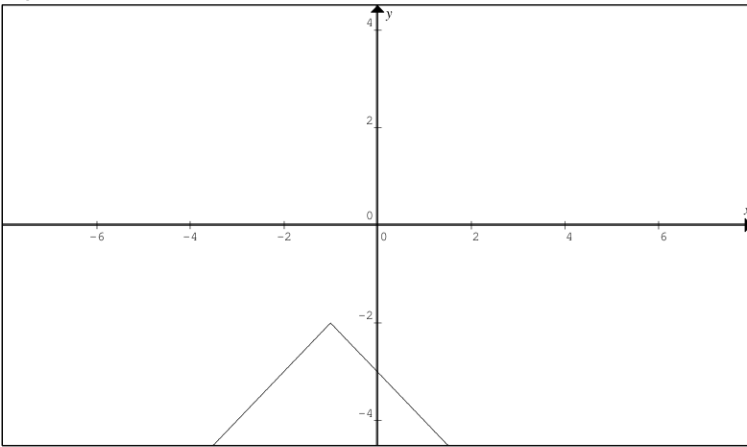
5)



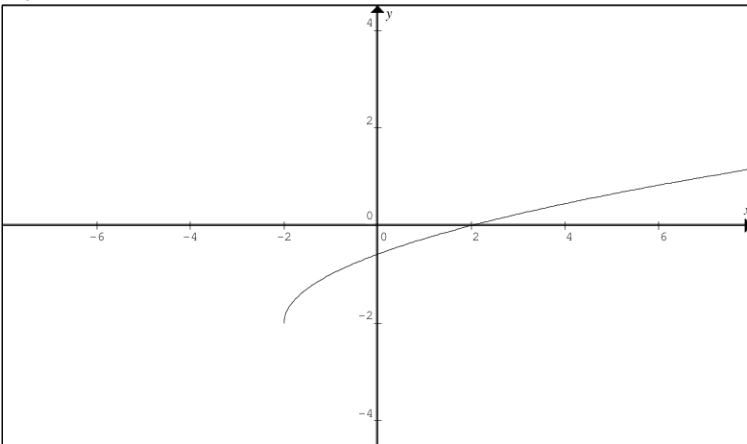
6)



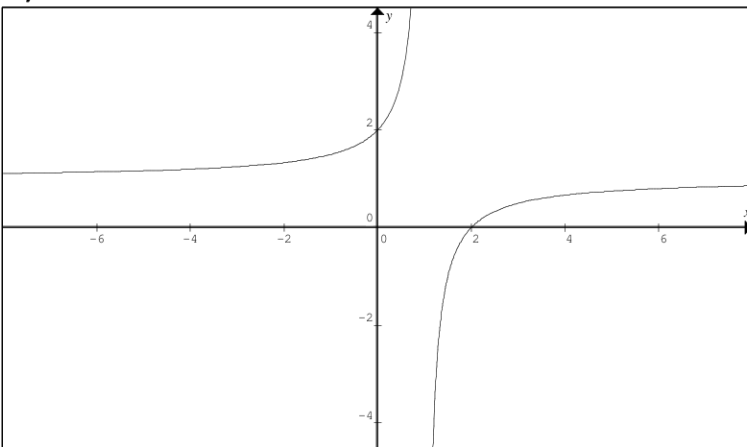
7)



8)



9)



10)

