

Intermediate Algebra Skill

Sketching Graphs Involving Stretching

Sketch the graph:

1) $y = \frac{1}{5}x$

2) $f(x) = -\frac{1}{2}x$

3) $g(x) = \frac{1}{2}x^2$

4) $h(x) = -\frac{1}{3}x^2$

5) $j(x) = \frac{1}{4}|x|$

6) $g(x) = -\frac{1}{2}|x|$

7) $f(x) = \frac{1}{4}\sqrt{x}$

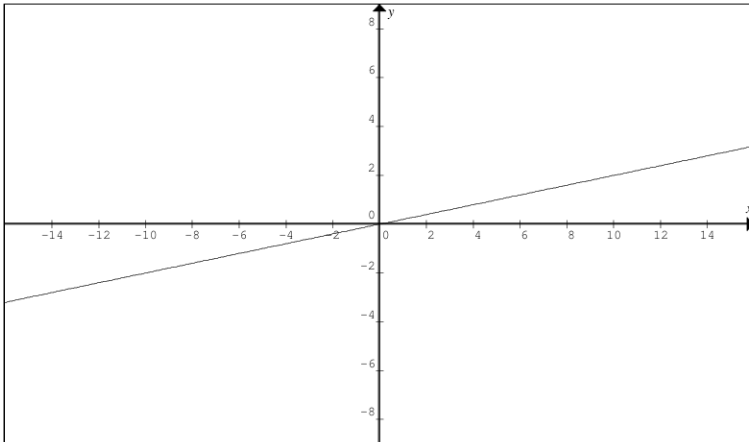
8) $T(x) = -\frac{1}{3}\sqrt{x}$

9) $Q(x) = \frac{1}{2x}$

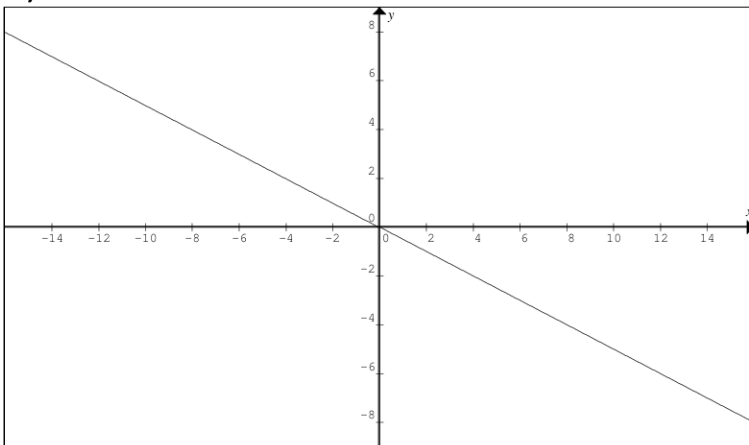
10) $H(x) = -\frac{1}{3x}$

Answers to Sketching Graphs Involving Stretching

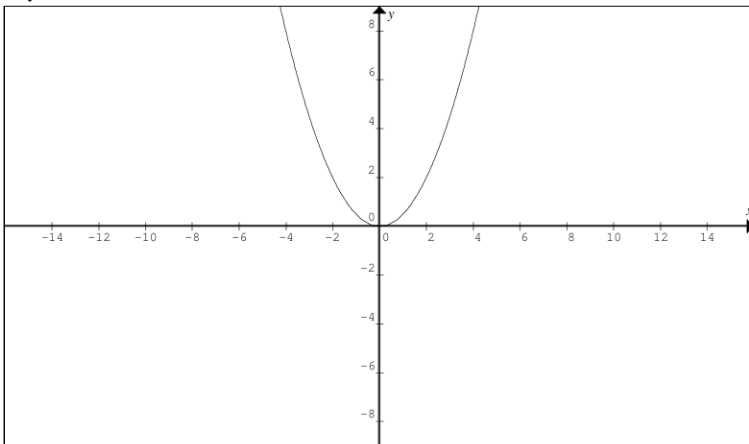
1)



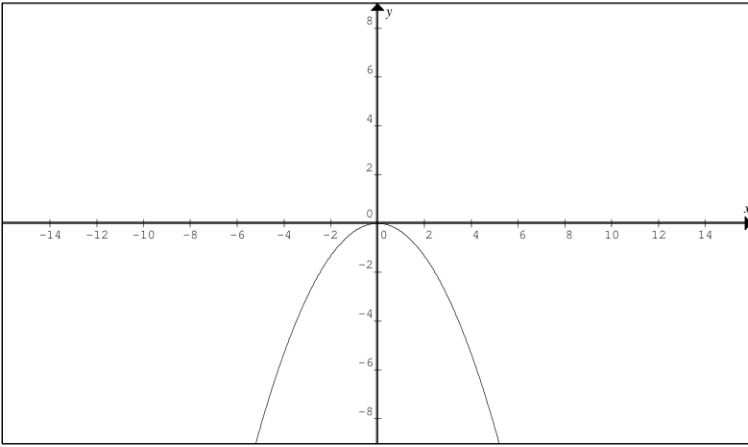
2)



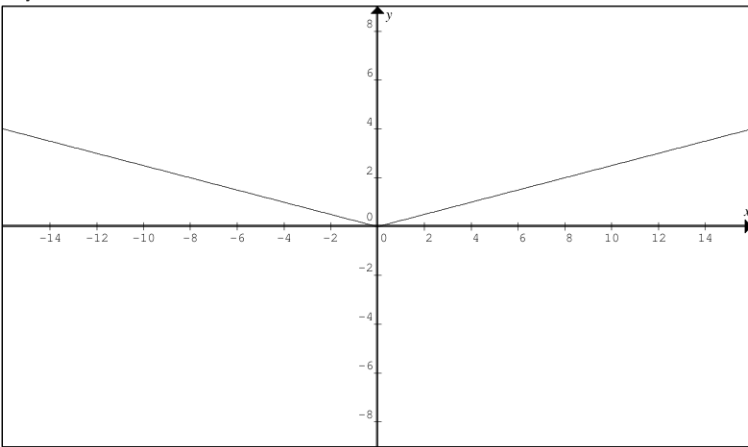
3)



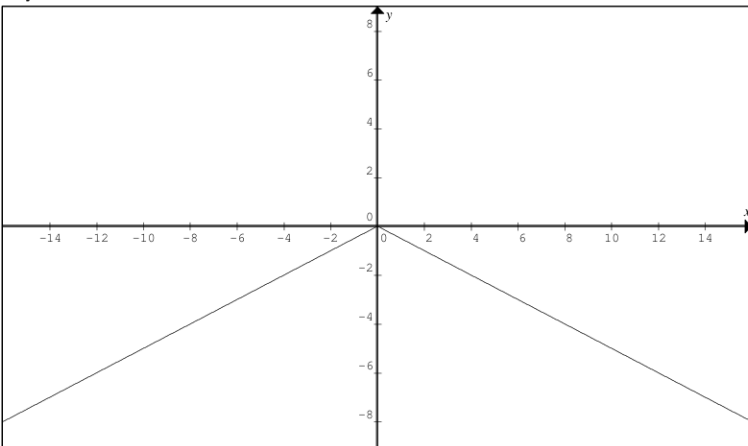
4)



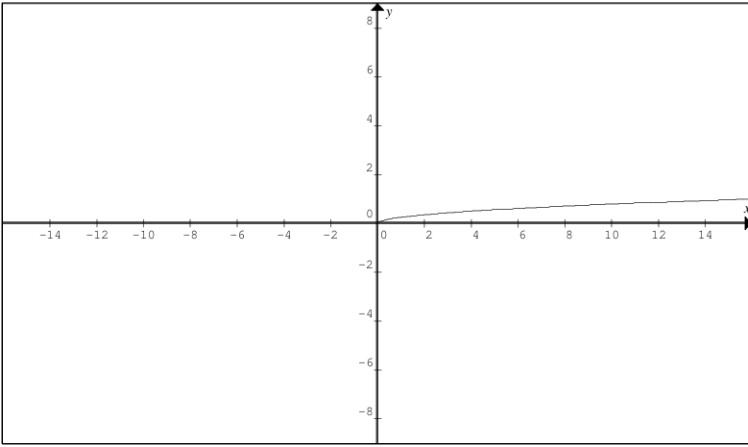
5)



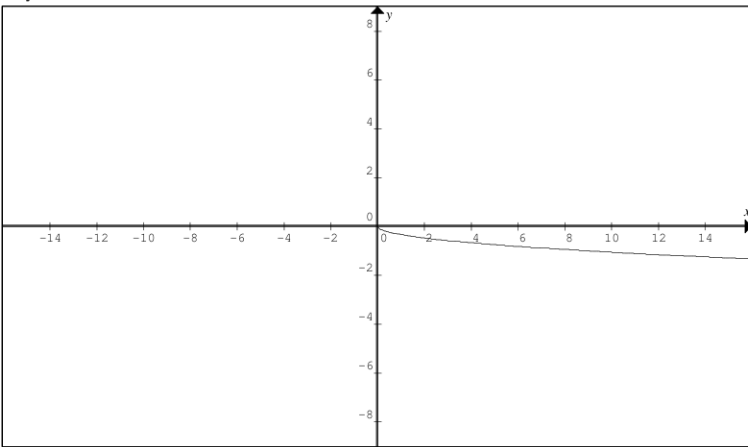
6)



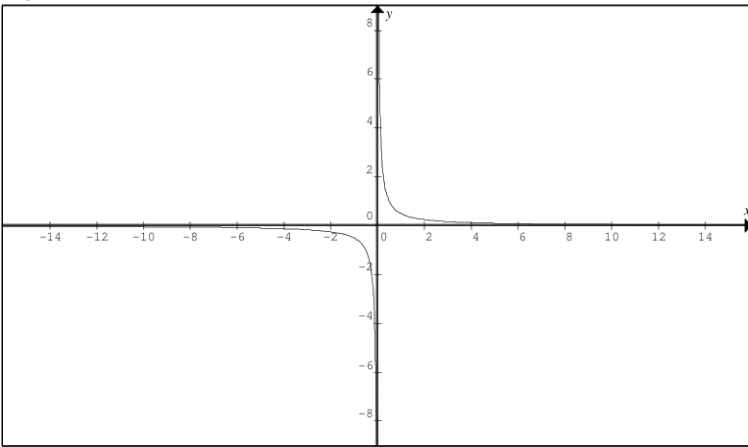
7)



8)



9)



10)

