

## ***Intermediate Algebra Skill***

### **Sketching Graphs Involving Horizontal Translation**

Sketch the graph:

1)  $y = (x - 2)^2$

2)  $f(x) = (x + 3)^2$

3)  $g(x) = (x - 1)^3$

4)  $h(x) = (x + 2)^3$

5)  $j(x) = |x - 4|$

6)  $g(x) = |x + 1|$

7)  $f(x) = \sqrt{x - 1}$

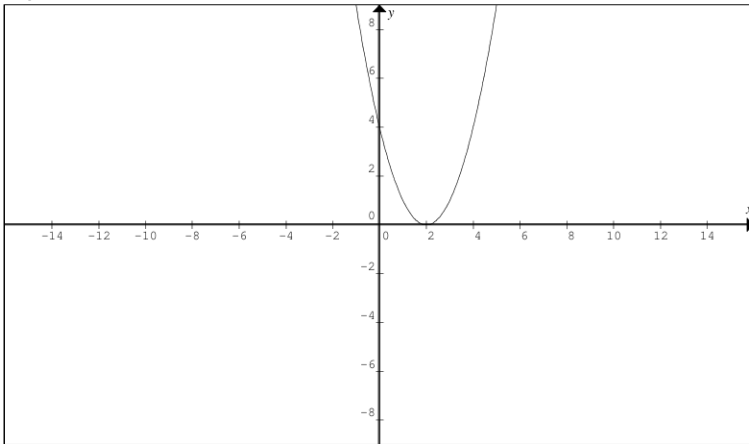
8)  $T(x) = \sqrt{x + 2}$

9)  $Q(x) = \frac{1}{x - 3}$

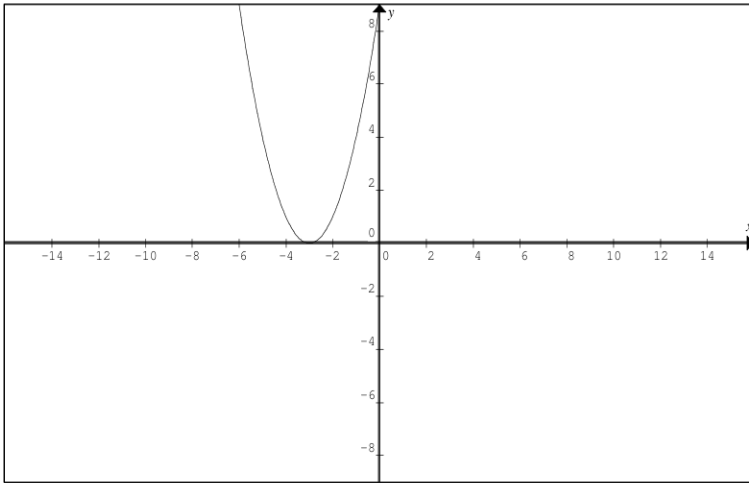
10)  $H(x) = \frac{1}{x + 4}$

# Answers to Sketching Graphs Involving Horizontal Translation

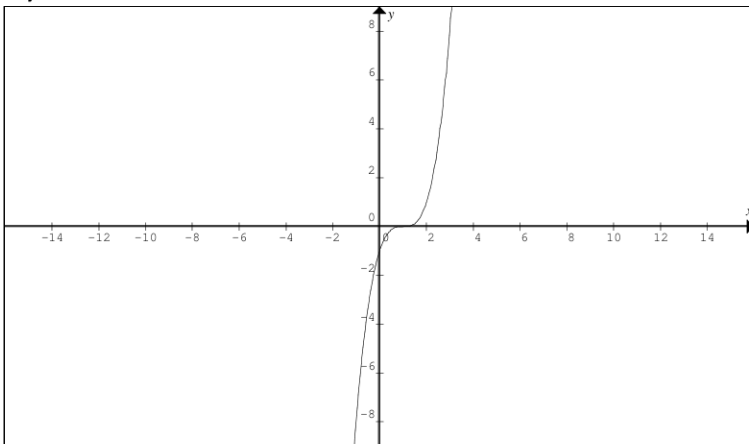
1)



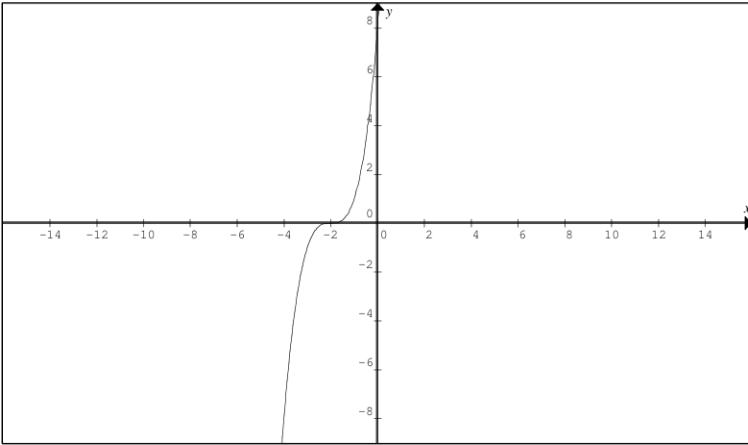
2)



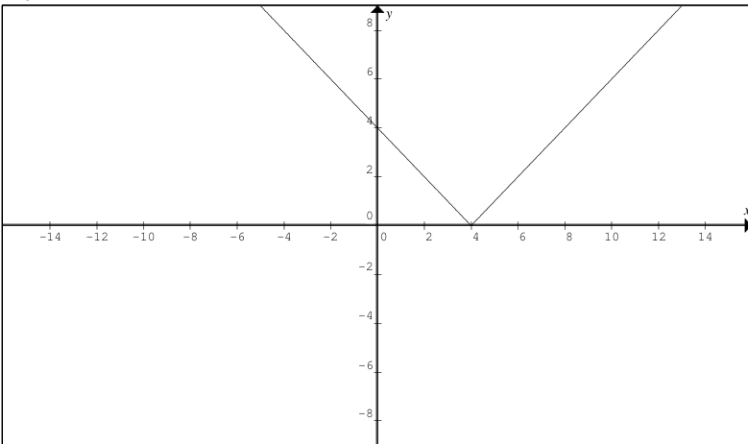
3)



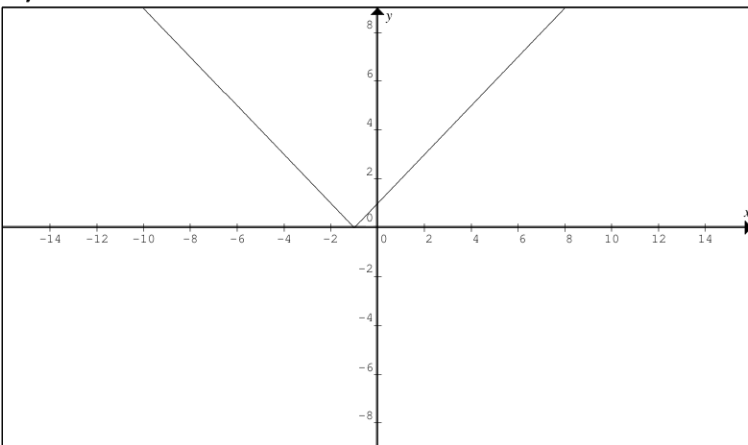
4)



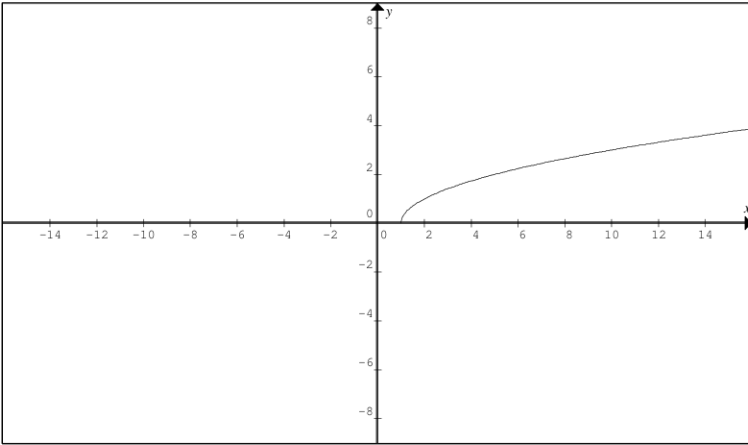
5)



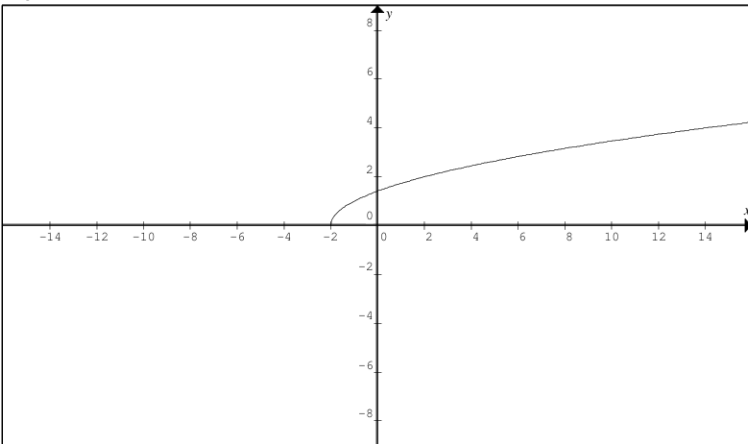
6)



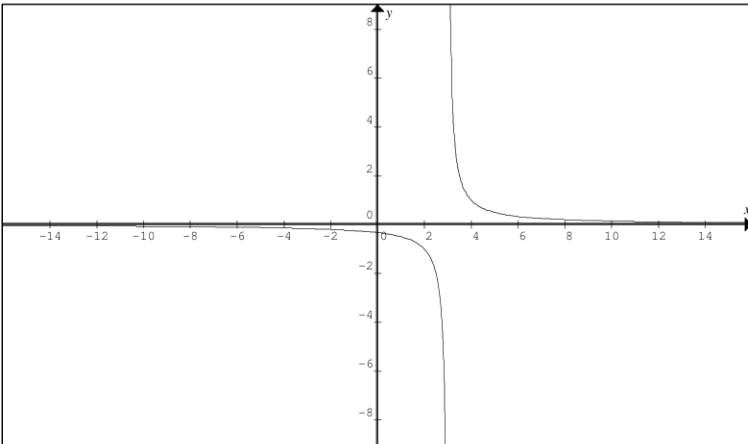
7)



8)



9)



10)

