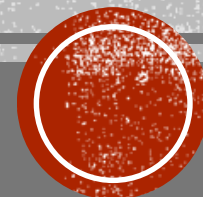
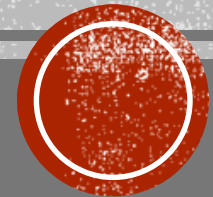


**LACCD SPOTLIGHT: WORKING
TOGETHER TO IMPLEMENT 705**



PEER EDUCATORS: A SCALABLE MODEL FOR EMBEDDED CLASSROOM SUPPORT



Center for Academic Success at Los Angeles Pierce College

Linh Tran – Embedded Math Tutor

Crystal Kiekel – Director

Saad Khan – Embedded English Tutor

EMBEDDED TUTORING AND 705

- Capable freshmen who may need:
 - College knowledge
 - Trial and error experience
 - Scaffolding
 - Study skills
 - Fundamental skills
 - Mental habits



TUTORING AND AB 705?

- Peer educators:
 - “Discourse bridge”
 - Strengthen autonomy
 - Personal peer connection
 - Course/section-specific
 - Extra eyes, ears, hands



THE CAS WAY

The goal of tutoring is to support students as they strengthen their learning processes so they become more independent learners.



EMBEDDED TUTORING PROGRAM...

- Peer educators - Assigned to 2-3 sections of a course
- Equity, BSI, general, grants, volunteers
- Fall 2019: Back to apportionment though TI (noncredit):
 - Easier to collect apportionment (money)
 - Increase amount of money to be collected
- Designed to support gatekeeper courses, English, ESL



THREE MAIN ACTIVITIES



1. Connecting with faculty
2. Connecting with students in class or online
3. Conducting study sessions, workshops, and tutoring in the CAS (or online or in another designated space)



SO WHAT CAN EMBEDDED TUTORS DO?

- Videos
- Workshops
- Learning materials – DLA, Study Guides, etc.
- In-class tutoring-related activities
- Online support



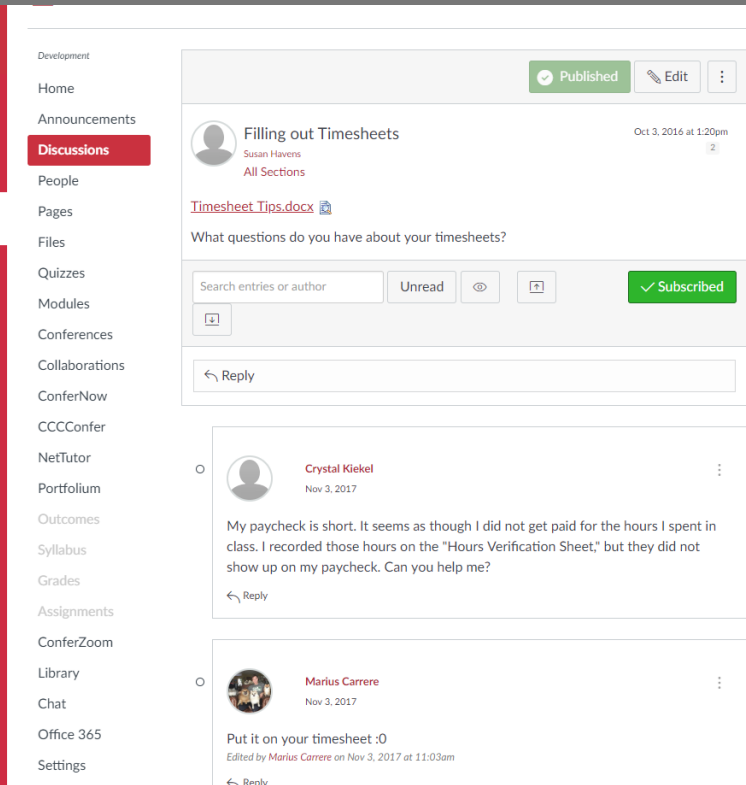
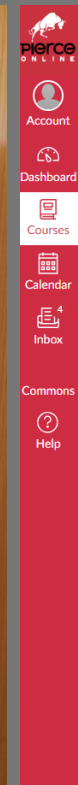
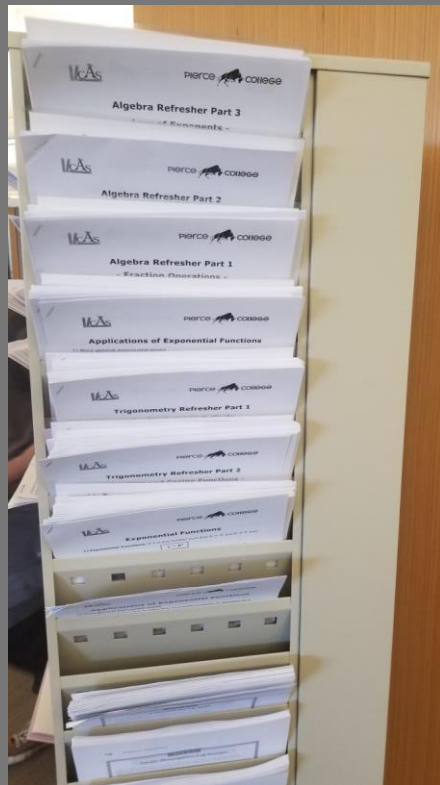
IN-CLASS ACTIVITIES

- Embedded tutors collaborate with faculty in a more interactive classroom.
 - A “flipped” classroom
 - In-class group work
 - Test review days





- Videos
- Workshops
- Handouts
- Canvas shells



SCALING UP

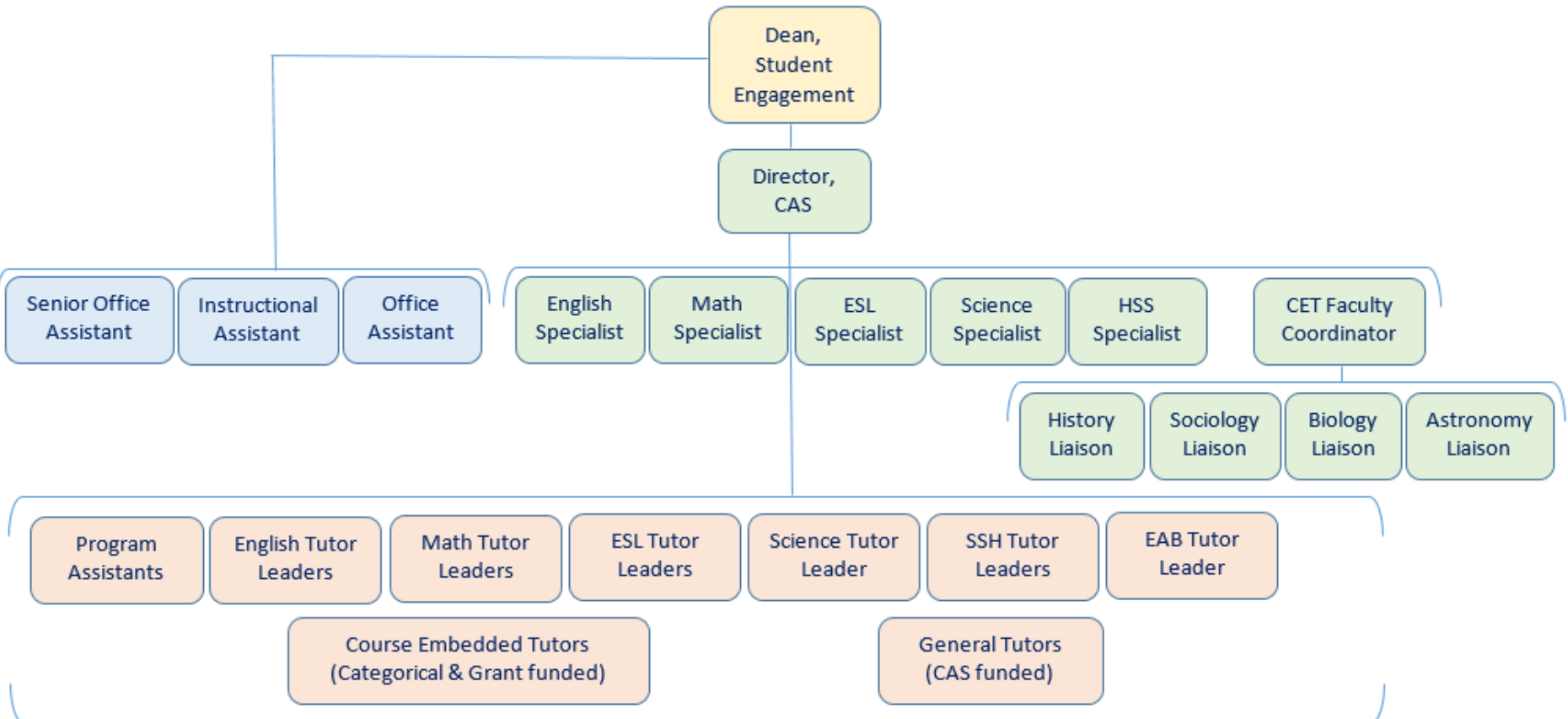
Year	10-11	11-12	12-13	13-14	14-15	15-16	16-17
Total Hours of in House Tutoring	8,034	20,255	20,961	31,726	42,769	49,790	49,646

Year	Fall 14	Fall 15	Fall 16	Fall 17
# Disciplines	2	3	18	39
# Faculty	4	8	27	28
# Tutors	23	131	177	188





Center for Academic Success
Los Angeles Pierce College
Proposed CAS Organizational Chart



Color Key:
Yellow: Administration
Green: Faculty
Blue: Classified Staff
Pink: Student Workers



thank you!

