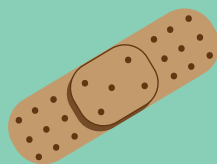




LOS ANGELES TRADE-TECH



**FIRST AID PROCEDURES
QUICK REFERENCE**

COLLEGE SHERIFF - Ext: 3611
STUDENT HEALTH SERVICES – Ext: 3764
ENVIRONMENTAL HEALTH AND SAFETY – Ext: 3632
PHYSICAL PLANT SERVICES – Ext: 3612

CAUTION

ONLY RENDER FIRST AID TO A WILLOING INJURED OR ILL PERSON AND TO THE EXTENT OF YOUR TRAINING, KNOWLEDGE AND EXPERIENCE. FIRST AID MAY BE RENDERED TO AN UNCONSCIOUS PERSON WITHOUT THE PARTY’S EXPRESSED PERMISSION, RENDERING FIRST AID TO AN UNCONSCIOUS PERSON IS PREFORMED UNDER “IMPLIED CONSENT”

Environmental Health & Safety

SPRING 2016

IN CASE OF LIFE THREATENING EMERGENCY

EMOTIONAL/EMERGENCIES

SERIOUS ACCIDENT/INJURY

BONE INJURIES (FRACTURE)

HEAT EXHAUSTION

CHEST PAIN

BEE STINGS

BURNS

BLEEDING, ABRASION, CUTS BITES, ETC.

HEAD AND NECK INJURIES

CHOKING

SEIZURES-FAINTING-HYPERVENTILATION

HEALTH CARE CENTERS FOR WORKERS’ COMEPNSATION