

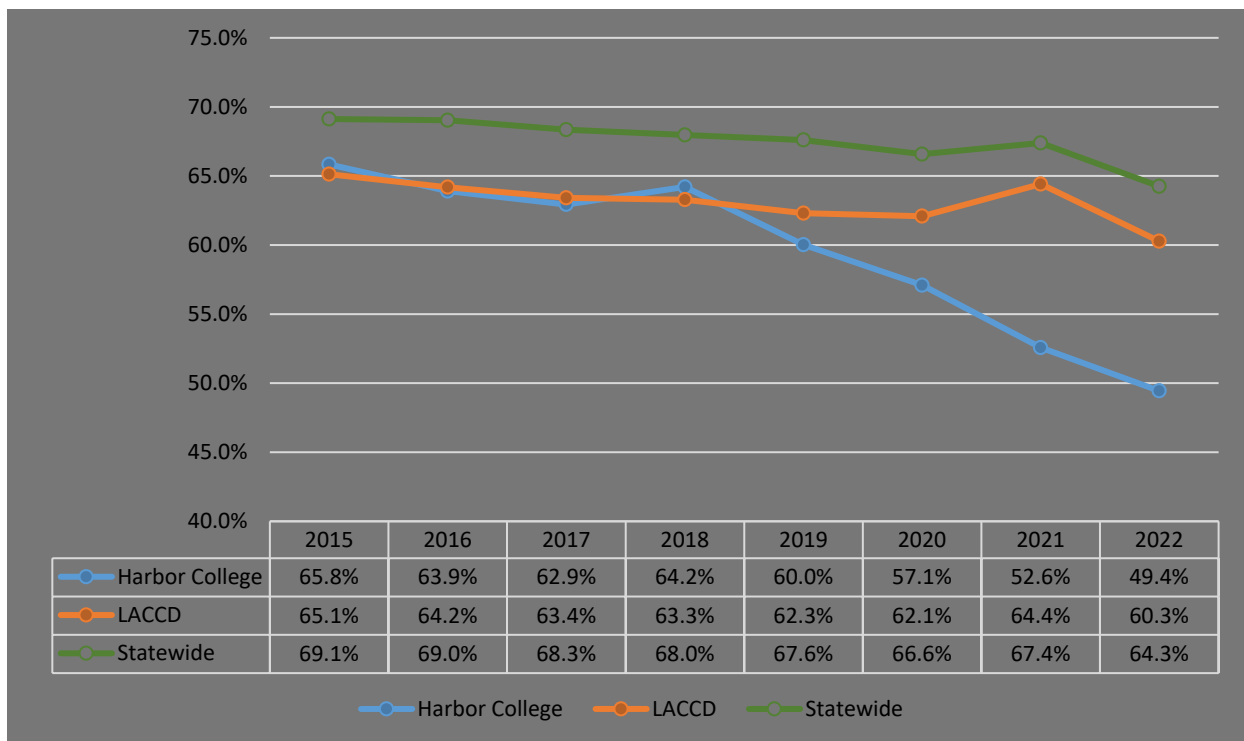
Persistence Rates

Persisted from Fall to Spring at the Same College

Table 5. 1 Fall to Spring Persistence Rates, 2015 to 2022

Year	LAHC	LACCD	Statewide
2015	65.8%	65.1%	69.1%
2016	63.9%	64.2%	69.0%
2017	62.9%	63.4%	68.3%
2018	64.2%	63.3%	68.0%
2019	60.0%	62.3%	67.6%
2020	57.1%	62.1%	66.6%
2021	52.6%	64.4%	67.4%
2022	49.4%	60.3%	64.3%

Figure 5. 1 Fall to Spring Persistence Rates, 2015 to 2022



Source: Student Success Metrics: <https://www.calpassplus.org/LaunchBoard/Student-Success-Metrics.aspx>