

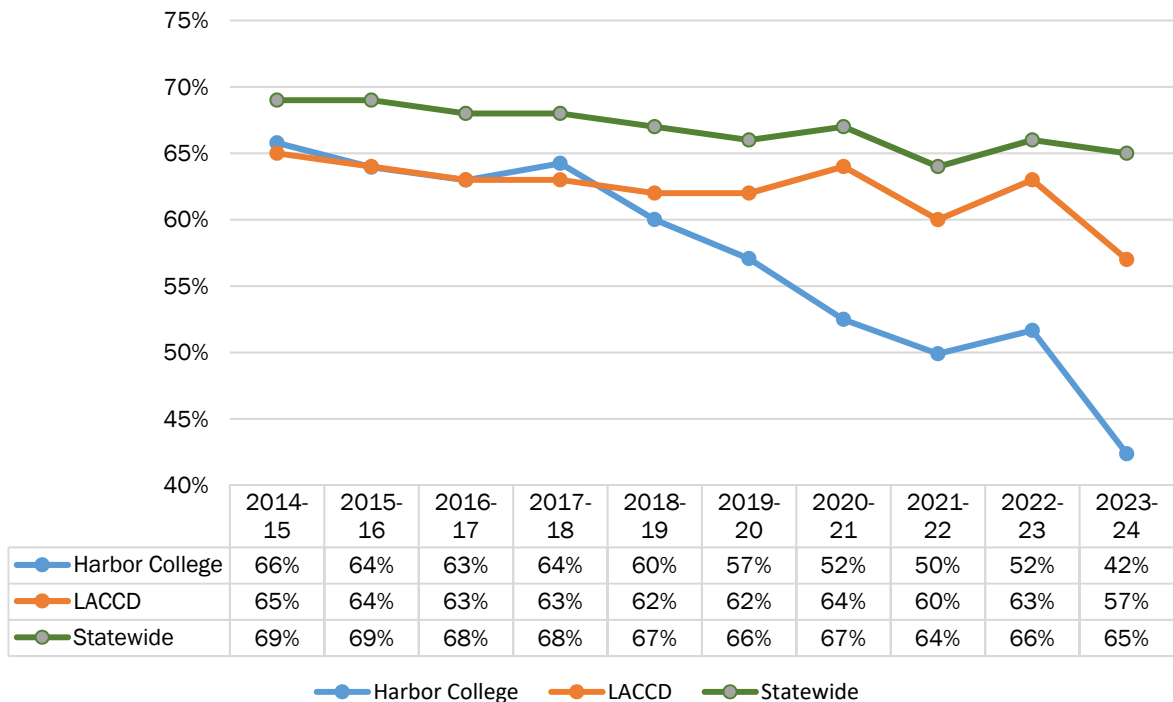
## Persistence Rates

### Persisted from Fall to Spring at the Same College

Table 5. 1 Fall to Spring Persistence Rates, 2014-15 to 2023-24

Year	Harbor College	LACCD	Statewide
2014-15	66%	65%	69%
2015-16	64%	64%	69%
2016-17	63%	63%	68%
2017-18	64%	63%	68%
2018-19	60%	62%	67%
2019-20	57%	62%	66%
2020-21	52%	64%	67%
2021-22	50%	60%	64%
2022-23	52%	63%	66%
2023-24	42%	57%	65%

Figure 5. 1 Fall to Spring Persistence Rates, 2014-15 to 2023-24



Source: Based on Chancellor's Office Management Information System, National Student Clearinghouse, CSU/UC Cohort Match, from [https://datavista.cccco.edu/data\\_views/metric\\_themes\\_nsa](https://datavista.cccco.edu/data_views/metric_themes_nsa)