

EAST LOS ANGELES COLLEGE

1301 Avenida Cesar Chavez
Monterey Park, CA 91754
(323) 265-8650

ELAC SOUTH GATE EDUCATIONAL CENTER

2340 Firestone Boulevard
South Gate, CA 90280
(323) 357-6200



Assessment Placement Process

New Student Orientation

Counseling (Abbreviated Student Educational Plan)

A+O+C
Assessment Orientation Counseling

All new students
must apply
online and then
complete...

A+O+C
Assessment Orientation Counseling

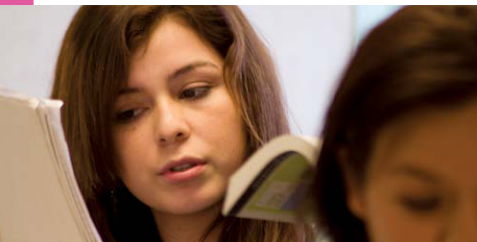
www.elac.edu

For more information visit
aoc.elac.edu

Assessment

Orientation

Counseling



Participate IN THE **Assessment Placement Process**

Assessment tests are offered on a walk-in basis, no appointment required. Please visit the Assessment Center for assessment lab hours or go online at www.elac.edu.

Assessment Center

Main Campus (E1-183)
(323) 415-4141

South Gate Campus (SG-120)
(323) 357-6295

Benefits of Assessment

- Proper identification of your English, Reading, and Math skill levels.
- Save time and money by placing into higher level courses.

Take the time to review your English and Math skills, especially if you haven't taken these subjects recently.

Sample Test Questions are available in the Assessment Center and online at www.elac.edu.

Enroll in courses based on Assessment Placement Results.

Know Before You Go

- Assessments are computerized adaptive tests and are untimed
- No Calculators/Dictionaries allowed
- Retest Policy is 1 year
- Allow at least 2 hours for enough time to participate in the Assessment Placement Process

www.elac.edu



Participate IN THE New Student Orientation



New Student Orientations are offered at various times throughout each month. Please visit the Counseling Department for dates & times or go online at www.elac.edu.

Counseling Department

Main Campus (E1-127)
(323) 265-8751

South Gate Campus
(323) 357-6213

www.elac.edu

Benefits of Orientation

- Counselors present & review general college information.
- Learn about Certificates, Associate Degrees and/or Transfer.
- In-Person New Student Orientations are offered in a group setting.
- Students may also participate in the Online New Student Orientation by visiting onlineorientation.elac.edu.

Counselors will develop an Abbreviated Student Educational Plan (ASEP) using the student's assessment placement results.

Know Before You Go

- In-Person Orientations are offered on a first-come, first-serve basis
- Arrive early as space is limited
- Bring your assessment placement results and a pen/pencil
- Orientations last about 2 hours

A+O+C



Counseling (Abbreviated Student Educational Plan)

Obtain ^{AN} Abbreviated Student Educational Plan (ASEP)

Students will obtain an Abbreviated Student Educational Plan (ASEP) during the In-Person New Student Orientation.



Counseling Department

Main Campus (E1-127)
(323) 265-8751

South Gate Campus
(323) 357-6213

www.elac.edu

Benefits of Counseling

- Counselors help students develop an ASEP.
- ASEPs assist students in outlining and completing academic goals.
- Your ASEP will list courses you should consider taking during your first semester at ELAC.

Students participating in the Online New Student Orientation will receive an e-mail at their **@*student.laccd.edu*** district e-mail account with information on how to obtain an ASEP.

Comprehensive Student Educational Plan (CSEP)

- During your first semester, schedule an appointment with a Counselor to develop a CSEP.
- All students must complete a CSEP by the time they complete 15 degree applicable units.
- Students can schedule an appointment in-person, over the phone, or online at ***counseling.elac.edu***.

A+O+C

3

