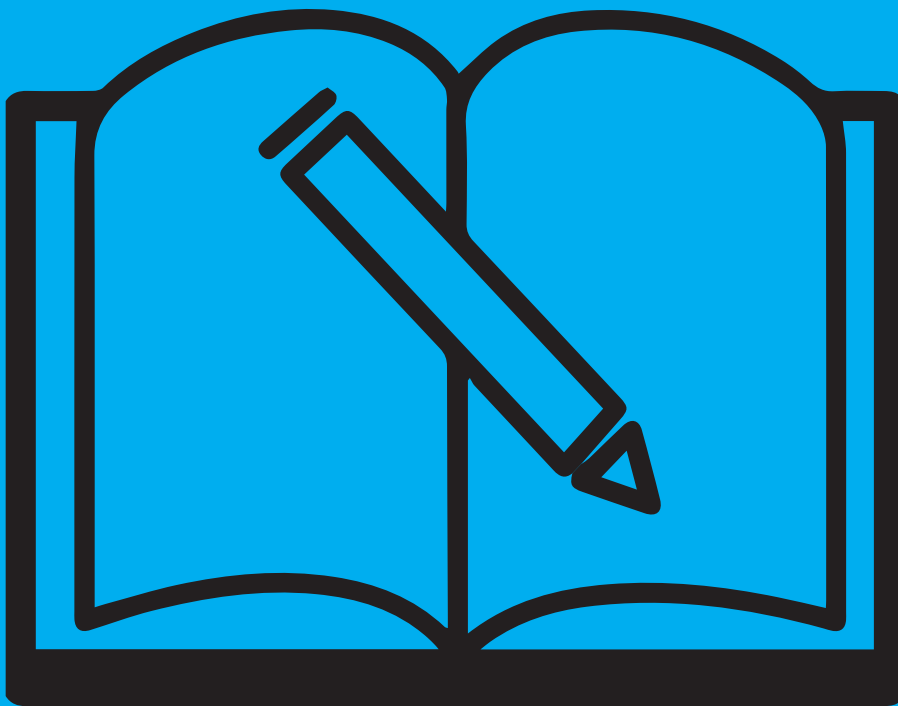


# ENGLISH

Career &  
Job Services



**CAREERS AVAILABLE WITH AN ENGLISH MAJOR**

For further questions regarding career pathways, Visit:

**Career & Job Services**

Monterey Park Campus - (323) 415-4126 - Located at E1-176

South Gate Campus - (323) 357-6216 - Located at Rm 124

[career.elac.edu](http://career.elac.edu)

**ELAC DEGREES AND CERTIFICATES:**

Associate Degree Program: English for Transfer

# ENGLISH

# CAREER PATHWAYS

## WRITING/EDITING

Novels: Fiction and Nonfiction  
Poetry  
Plays  
Screenwriting  
Journalism  
Freelance Writing

## TECHNICAL COMMUNICATION

Technical Writing and Editing  
Grant and Proposal Writing  
Corporate Communications and Training

## PUBLISHING

Editing  
Sales  
Marketing  
Administration

## EDUCATION

Teaching  
Administration  
Academic Advising  
Student Services  
Information/Library Science  
Research

## ADVERTISING

Copywriting  
Art Direction  
Web Page Design  
Account Management  
Media

## PUBLIC RELATIONS

Media Relations  
Social Media  
Fundraising  
Speech Writing

## BUSINESS

Management  
Customer Service  
Sales and Marketing  
Human Resources  
Insurance Claims and Underwriting

## LAW

Law Assistance  
Prosecution  
Defense  
Contractual  
Corporate  
Nonprofit or Public Interest  
Government  
Mediation  
Lobbying

## ELAC STUDENT ORGANIZATIONS AFFILIATED WITH THE ENGLISH DEPARTMENT

### ENGLISH CLUB

Club members collaborate to build a supportive and engaging community, whose vision includes:

- Sharing literary recommendations
- Reading each other's poetry and fiction pieces
- Exploring various transfer programs and career paths available to English majors
- Working with other on-campus clubs, groups, and events, such as Safe Zone, One Book One College, and the Arts Festival
- Networking with Los Angeles' literary community
- Inviting professors, professionals, and ELAC alumni to speak on various topics
- Organizing field trips to universities, museums, theaters, etc.
- Hosting a graduation reception for English majors

Faculty Advisors: Professor Raeanna Gleason (gleasorl@elac.edu), Professor Luis Orozco (orozcolr@elac.edu), and Professor Lorena Madrigal (madrigl@elac.edu)

### DELLORO TRANSFER PROGRAM IN SOCIAL JUSTICE

The Delloro Transfer Program in Social Justice is a cohort learning community that provides scholars with a strong foundation of skills to succeed both academically and as advocates for their communities. We prepare students to be transfer-ready through an encouraging network of support and a strong understanding of the transfer process. The program offers a unique combination of coursework, close student-faculty interactions, peer-mentorship and ongoing workshops and events centered on social justice. The Delloro Transfer Program is rooted in the belief that a diverse group of knowledgeable and empowered students will thrive academically and serve as leaders for social justice in their communities and campuses.

Faculty Advisor: Professor Raeanna Gleason (gleasorl@elac.edu)

### PUENTE CLUB

The mission of the Puente Project is to increase the number of educationally underserved students who enroll in four year colleges and universities, earn degrees, and return to the community as leaders and mentors to future generations. The program provides English classes, academic advising, and mentorship. Puente is open to all interested students.

Faculty Advisor: Professor Carlos Centeno (centenc@elac.edu)

### ESL CLUB

The club represents all current and former ESL students and helps them learn more about American pop culture and many other cultures. By being exposed to others' ideas, cultures, traditions, values and morals, students will gain a wealth of knowledge that they might otherwise be missing out on. A last thing that this club provides is the opportunity to students to raise money for scholarships to help ESL students continue their educational goals at ELAC and beyond.

Faculty Advisors: Professor Maria Betancourt (betancme@elac.edu) and Professor Allison Bruins (bruinsam@elac.edu)

Faculty Advisor: Maria Betancourt (betancme@elac.edu)

### LITERARY JOURNALS PUBLISHED AT ELAC

#### EAST SIDE ROSE

East Side Rose is a literary journal curated and published by ELAC's Writers Society students. They along with artists from surrounding communities share their creative works with host Professor Obed Silva to produce The East Side Rose Podcast, a companion production to the journal. The podcast is produced by Professor Gregory Mena on the campus of East Los Angeles College. Find out more at <http://www.eastsiderose.org>.

Faculty Advisor: Professor Obed Silva (silvajo@elac.edu)

#### MILESTONE

Milestone is the annual literary arts magazine for East Los Angeles College since 1950 and encourages submissions from students and staff, the East Los Angeles community, and beyond. For over half a century, Milestone has aimed to present diverse student voices and has showcased the works of renowned local artists.

Faculty Advisor: Professor Matthew Mejia (tasakam@laccd.edu)

#### HYBRID CULTURE



Hybrid Culture Magazine is a journal that is written and designed by English as a subsequent language students (E.S.L.) at East Los Angeles College. All students, faculty, and staff are welcomed to submit their work for publication, for it highlights the diverse experiences and needs of E.S.L. learners. This magazine, founded in 2017, not only provides a platform for Credit and Noncredit E.S.L. student advocacy, but it also offers them the opportunity to express their voices and share with others their creativity.

Faculty Advisor: Maria Betancourt (betancme@elac.edu)





## Career & Job Services

### Main Campus

 E1-176  (323) 415-4126  
Monday-Thursday 8:00 a.m. - 7:00 p.m.  
Friday 8:00 a.m. - 4:00 p.m.

### South Gate Campus

 Room 124  (323) 357-6216  
Monday-Thursday 8:00 a.m. - 5:00 p.m.  
Friday 8:00 a.m. - 2:00 p.m.